

DEPARTMENT OF GEOGRAPHY CHAIR UPDATE

INSIDE THIS ISSUE:

<i>Department Retreat</i>	1
<i>Chair's Update</i>	1
<i>FARz/Annual Evals</i>	2
<i>Urban Planning</i>	3
<i>AAG</i>	3
<i>Campus Safety</i>	3
<i>Diamond</i>	4

The AAG was founded in 1904. The archives of the organization are housed at the University of Wisconsin-Milwaukee.



RETREAT ADVANCES DEPARTMENT

The Department held its annual retreat on Friday, February 10th from 9-4:00 at the Brooker Creek Preserve. The Department discussed a number of interesting and important issues. Here are some highlights.

Research Focus.
The Department defined new research foci for the Department based upon current research interests of the faculty. These research areas replace earlier published research strengths identified when the Department developed the Ph.D. Proposal. The main research areas are identified as:

1. **Climatologic, Geomorphic, and Hydrologic Processes. (Reeder)**
2. **Economic, Social, and Planning Issues in the Urban Environment. (Archer)**
3. **Environmental Hazards and Health. (Tobin)**
4. **Geographic Information**

5. **Science. (Reader)**
5. **Globalization and International Development. (Basu/Bosman)**
6. **Karst Science. (Brinkmann)**



Faculty listed after each area should turn in a description of the area to Department faculty for review prior to the March 3rd faculty meeting. The description will go on the website.
We also examined how best to benchmark our research and our students.
We will begin to develop annual reports of the

following:

1. Number of student publications in refereed journals.
2. Number of students placed in Ph.D. programs in other universities.
3. Number of students placed in jobs related to their degree.
4. Diversity of student body.
5. Exit survey a year after graduation.

We also discussed how best to increase our research profile in the Geography community by enhancing our research publication rate and by seeking external funding or awards/honors.

Thanks to everyone for a great retreat!

CHAIR'S UPDATE

1. The Dean's Office sent the signed letter of offer to Fenda Akiwumi this week.
2. The search for the new Assistant Professor line in Remote Sensing continues with the visit of the next candidate for the position.
3. The search for the GIS Instructor has moved into final screening prior to interviews..
4. Summer School should be live on Oasis. Students cannot register yet, but you can see your summer courses listed.
5. No news yet from the Dean's office on the admin structure for a Geography Department that includes ESP.

Tarpon Springs is the oldest community in Pinellas County. It was founded in 1887. Not surprisingly, it has over 50 miles of coastline.



GOING TO THE FAIR-THE ANNUAL EVALUATION PROCESS

First of all, many of you have not completed the on-line signatures for the Fall and Spring AFD/FAR forms. Please do this by the end of the month. Nasty emails to follow for non-compliance. Plus, I will show your photo on the flat screen in the lobby.

Second, many of you know that while we were out enjoying our retreat in the woods, the Deans Office announced to the Chairs that all annual evaluation processes for faculty will be on-line this year.

Well, given that we were already partway through the process, I requested that

we have a delay of a year to comply with the online process. A big thanks to Arthur Guilford for allowing us to delay for one year.

HOWEVER, Department publication productivity will be assessed using the FAIR system. Thus, if you do not post your publications using the FAIR system for the 05-06 year, you will hurt the Department. Thus, please do post your publications and help the Department's efforts gain recognition.

ALUMNI NEWS

Irene Nikitopoulos recently emailed me to up-

date me on her career. She graduated with her masters with us in 1997. She worked as a planner for the City of Tarpon Springs and for Pinellas County Government. She took off some time after this to spend time with her new children.

Irene now lives in Bradenton and is interviewing for a part time teaching position with Manatee Community College.

In her email, Irene said she looks back at the time she spent at USF Geography with fond memories and that the degree opened many doors for her.

FACULTY GRANT ACTIVITY:

Since July 1, the following grants were submitted with Geography lead PI's (note, some of the grants had other PI's as well, but are not listed for space reasons):

1. GIS for transit professionals, Zandbergen, CUTR, \$3360.
2. Mobile home parks and seasonal lifestyles: Disaster resilience in senior living communities, Tobin, NSF, \$237,770.
3. Effect of National Flood Insurance Program on Redevelopment Decisions, Tobin, NSF, \$8584.
4. Research to develop new straight line diagram applications for the Florida Department of Transportation, Chakraborty, FDOT, \$16,177
5. Developing GIS based indicators to support social cultural effects analysis for the efficient



region? Archer/Bosman, NSF, \$425,364.

Other grants were submitted with non-geography lead PI's. For example, Steve Reader is part of a major grant submitted through public health and Phil Reeder is part of a grant submitted through ESP.

While we have a way to go, we are making progress! Congratulations to all of you who are grant active.

transportation decision making program, Chakraborty, Data Transfer Solutions, \$20,222.

6. Water quality assessment of the C.W. Bill Young Regional Reservoir, Brinkmann, Veolia Water North America, \$44,664.
7. The karst information portal, Brinkmann, NSF, \$370,687.
8. Florida's I-4 tech corridor: An emerging global city-

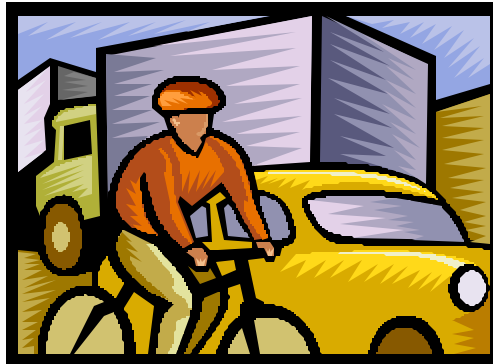
Please let me know if there are any additions/corrections to this list. I hope to have a more complete list soon that includes those grants for which Geographers are not lead PI's.

URBAN PLANNING PROPOSAL BUILDS MOMENTUM

Congratulations to Liz Strom for completing a first draft of the Urban and Regional Planning Masters Proposal.

I received the first draft today for my review. After she receives my comments, she will then submit it to others for review. Hopefully, we can get it to the various approval committees soon.

No matter where I go, it seems that someone mentions the planning proposal. The other day I was at



a performance of the Florida Orchestra. At intermission, I ran into Suzanne Moore who is in administration here at USF. She helped Liz with some of the information she needed with the proposal.

Suzanne is very excited about the new program and expressed that everywhere she goes, people are talking about the new degree.

Clearly, the university and local community are very interested in the development of the degree program within the College.

Thanks to all of you who helped Liz with the proposal and I look forward to receiving feedback from everyone in the near future.

AAG BLOWS INTO WINDY CITY

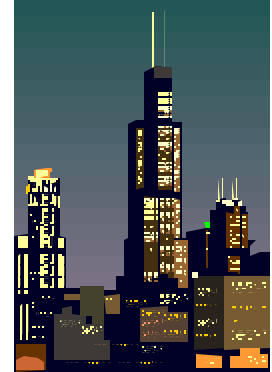
AAG is right around the corner! Many classes will be cancelled and many graduate students will be absent.

Please let me and Fredde know your emergency contact numbers while you are out of town.

Fenda Akiwumi will be at the AAG and I will try to arrange a get together with

her and whoever is available at the meeting from USF.

Also, please help our students by asking them to attend specialty group meetings with you so they can learn about the governance of the AAG and participate more fully with the meeting.



“Hell has been described as a pocket edition of Chicago.”

Ashley Montagu

CAMPUS SAFETY

On Thursday, February 10th, a murder took place not too far from our building in the parking lot at Magnolia Hall.

The boyfriend of a resident was shot and killed around 11:30 pm as he was leaving Magnolia Hall and walking to his car. One theory of the murder is that he happened upon car thieves.

While we don't know for sure what happened, we

do know that the campus can be a dangerous place, particularly late at night. Please be vigilant when you walk to your cars in the evening.

Also, please remember to advise your students to leave in pairs late at night to avoid any difficulties. Our building is one of the most distant buildings from student parking.



DIAMOND BRINGS MULTIFACETED RESEARCH TO USF

Noted UCLA geographer Jared Diamond will visit USF as part of the University Lecture Series on Thursday March 2nd.

Diamond is scheduled to deliver his lecture at 7:00 pm in the Marshall Center Ballroom. USF Geography faculty will be invited to a private reception after the speech.

The next day, on Friday, March 3rd, Dr. Diamond will be a guest at a Department reception from 10-11 am. All students are welcome to attend. Indeed, this event is specifically intended for graduate students

and interested undergraduate students to meet Dr. Diamond.

Diamond is the author of a number of books and articles. His current book, [Collapse: How Societies Choose to Fail or Succeed](#), is the subject of his talk on March 2nd.



KARST-O-RAMA COMES TO USF

A slew of karst research talks are scheduled over the next several weeks. On Wednesday, February 22nd, several famous researchers will be on campus for talks.

Dr. Will White, often considered to be the father of modern karst science, will present in BEH 104 at 8:00 following three talks by the

equally famous team of Reeder, Jol, and Freund that start at 6:00.

In addition, Dr. Sam Upchurch, the former Chair of the Department of Geology and Dr. Bern Szukalski, Cave and Karst Solutions Manager with ESRI will be on campus to give talks on March 23rd. Bern, a noted expert on man-

aging karst information in ESRI products will have time to meet with students and faculty while he is on campus and he may be willing to visit some classes.

UPCOMING DATES

February 17-19th: Florida Society of Geographers
 March 3rd: Department Meeting, Conference Room, 9-noon with a break for Jared Diamond Reception.
 March 3rd: Jared Diamond Reception. 10-11 am.
 March 7th-11th: AAG Annual Meeting
 March 13-18th: Spring Break!
 April 21st: Department Meet-

ing, Conference Room, 9-11.
 April 28th: Last day of the Spring Semester!!!



“You are much more likely to be attacked by lightning or your own toilet than you are a shark.”

Peter Benchley

1940-2006